

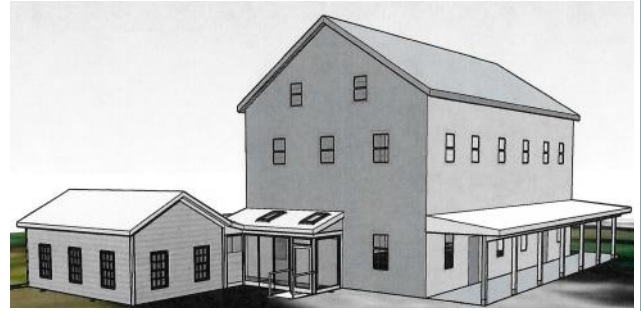
BYBERRY MONTHLY MEETING

Volume 2, Issue 6

November 2020

We are sooo excited!!! Kate Cowing (of Kate Cowing Architect, LLC) has shared with us her draft 3D model of the new addition.

Kate has worked tirelessly with the Trustees, Members, Phila Historical Commission, various planning and utility boards, to make sure that everyone is onboard with the plans... and it's really starting to come together. Now we just need Covid to disappear (for many reasons, not the least of which is) so we can get back to worshipping in the meetinghouse!



Reminder: We continue to meet in Zoom on Tues & Thurs @7PM, and Sun @ 10AM for M4W. Email us at ByberryQuakers@gmail.com for the Meeting ID and link.

PYM Clerks' Queries: We continue to discern the PYM Clerks' Queries in our Worship Sharing on Tuesday evenings at 7:30. The topics are: Membership, Racism and Climate Change, and have resulted in some wonderful dialogue and exploration. Do consider joining us as we look for a sense of our personal feelings on these topics, as well as our corporate concerns.

Unplug & Recharge — SO, I know we keep saying that the nice weather is drawing to a close — and yet somehow there must be some Divine Intervention, because our Thursday evenings of late have been blessed with lovely temps and no precipitation. As such, we've now managed to get together for Unplug & Recharge (at Upper Dublin where there is wi-fi) to offer a hybrid Zoom/In-Person evening worship. Keen to join? Just let us know! Well keep you posted.



Quaker Corner / Adult Discussion

The Eleventh Query: Witnessing in the World: Education

Our Meeting:

- What does our meeting do to support & improve public education?
- What help do we provide for the children and adults in our meeting to pursue their educational goals?
- What is our meeting's role in support of Friends education? If our meeting is connected to a Friends school or schools, does this relationship nurture spiritual life and the manifestation of Friends principles?
- Do we enable children in our meeting to attend a Friends school? Does our meeting work with the family to consider all available means of support?

Personally:

- How do I show my concern for the improvement of public education in my community?
- Do I demonstrate my encouragement and support for Friends education through awareness and service?



Best wishes for a lovely Thanksgiving... while it may not be your "typical" celebration, we hope it is joyous nonetheless.

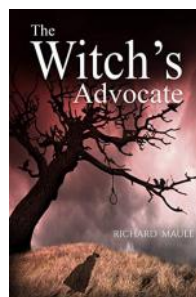


Who was

Thomas Maule...?

Join us in reading
"The Witch's Advocate"

to learn more about this interesting and courageous seeker of Truth, whose actions brought about the Freedom of Speech, Religion and Press !



ByberryQuakers.org/Events/Zoom_Book_Club

Zoom Discussion is
Monday, Nov. 9th at
7PM.

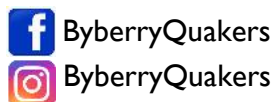
Email us to get the
Zoom ID and
Password



Harry
L.
(11/19)

BYBERRY MONTHLY MEETING, 3001 Byberry Road, Philadelphia, PA 19154

www.ByberryQuakers.org



ByberryQuakers

ByberryQuakers

(215) 632 4027

ByberryQuakers@gmail.com